



Production Scheduling

Actively manage projects on the job site, improve communications, and exchange information between your field supervisors and the office with Timberline® Office Production Scheduling.

Production Scheduling provides users of hand-held devices with a fingertip information system allowing superintendents to monitor, control, and communicate daily construction activities. From the field they're able to keep accurate construction schedules and have the information they need to reduce costly errors and maintain consistent cycle times. They're able to efficiently:

- Manage key schedule tasks.
- Update the project schedule.
- Generate vendor and subcontractor notifications by fax or e-mail.
- Look up job, vendor, and purchase order activity* information.

Set up scheduling steps from A to Z.

Production Scheduling can be operated as a stand alone application, used with Timberline Office accounting software, or further integrated with Timberline's suite of production management products. If you choose to integrate with our accounting or production management software, information contained in Timberline Office is available to jumpstart the scheduling process.

Whether you choose to integrate or not, schedule templates developed from a builder-defined master list of construction activities and milestones get your jobs started on the right foot. Choose the start date and a specific

schedule is generated based on construction sequence, duration, and lag times.

Four dates are tracked for each activity: baseline, projected, scheduled, and actual. (Projected dates are based on late starts and finishes or early starts and finishes.)

By tracking these dates you can monitor construction status by individual job, community, superintendent, or the entire company for:

- Baseline vs. projected
- Projected vs. actual
- Scheduled vs. actual
- Activity variance by subcontractor
- Trade contractor resource allocations

Reporting and scheduling activities.

With a database of information supporting it, Production Scheduling lets you generate reports for trade contractors, suppliers, and superintendents. Then you can automatically deliver the information via fax or e-mail according to a predetermined schedule. Send updated schedules the same way.

A scheduled date for each activity allows a field supervisor to electronically notify a subcontractor or supplier when to start an activity. If a particular activity must be re-scheduled, a

custom list of variance codes allows the superintendent to capture an explanation. The system also keeps track of how many times a superintendent reschedules trades as an indicator of how well the job is being managed.

Streamline PO payment and improve communications.

With tools in hand to record daily construction activities and keep schedules current, superintendents can keep office personnel up-to-date on job activity and in sync with the next steps. When Production Scheduling is integrated with Timberline Office accounting or production management software, schedule updates can automatically initiate purchase order workflow and keep all related job reporting current.

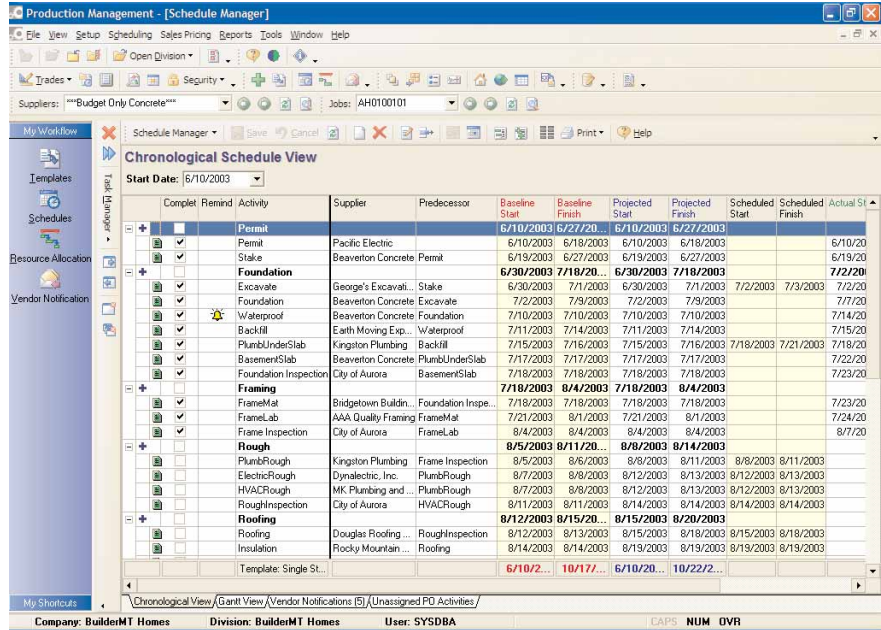
Features and efficiencies.

- Create schedules efficiently using schedule templates and information already contained in your Timberline accounting or production management software.
- Download information and let superintendents manage and update job schedules and task status from job sites on handheld devices. Then automatically feed all field activity updates, including actual, projected and scheduled dates, back to the home office.
- Share notes and reminders between the centralized schedule and handheld devices.

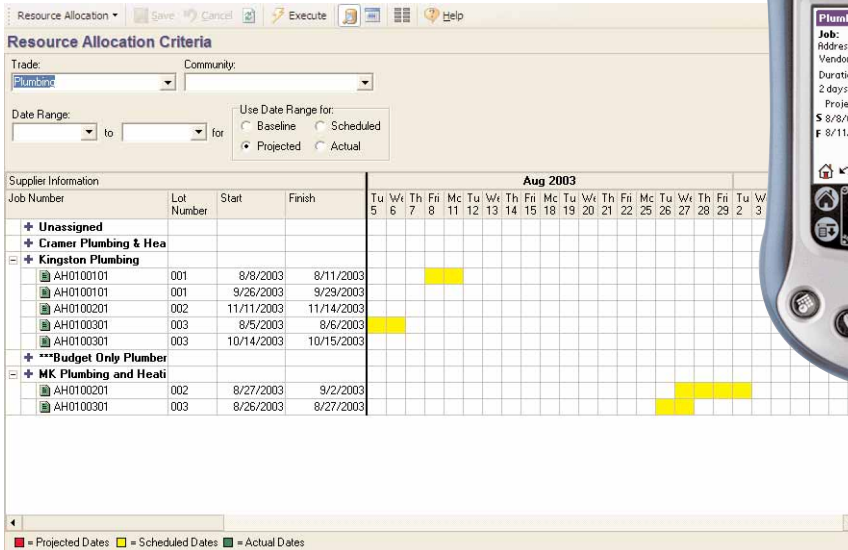
- Display screens including Schedule Manager, Gantt Chart View, Resource Allocations, and Vendor Notifications.
- Send automatic schedule notifications to trade contractors and suppliers via fax or e-mail.
- View and sort schedules by community, job, trade, vendor, and activity.
- When individual activity is completed, trigger updates to purchase order status* in the Timberline Office Homebuilder Management System (part of Timberline's production management suite of software).
- Analyze vendor schedules across communities.
- Handle multiple predecessors when scheduling.

Production Scheduling, developed and supported by BuilderMT, is part of Timberline Office, fully integrated financial and operations software for construction and real estate professionals.

*Feature available only when using the software in conjunction with Timberline Office Production Management.



Set multiple start and finish dates in the master schedule. Include baseline, projected, scheduled, and actual dates plus variance codes, notes, reminders, and more.



Determine the resource load of each sub and supplier by job. Move jobs to different vendors to balance resources and stay on schedule.



Use handheld devices to enter variance codes as well as start and finish dates for scheduled and actual. Actual dates entered will trigger updates to the schedule and auto-select associated POs* as ready for payment.